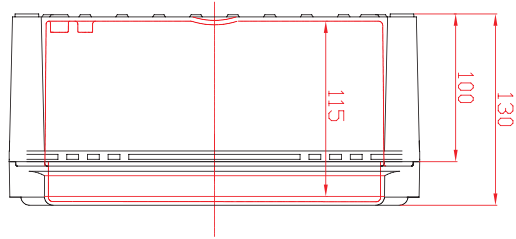
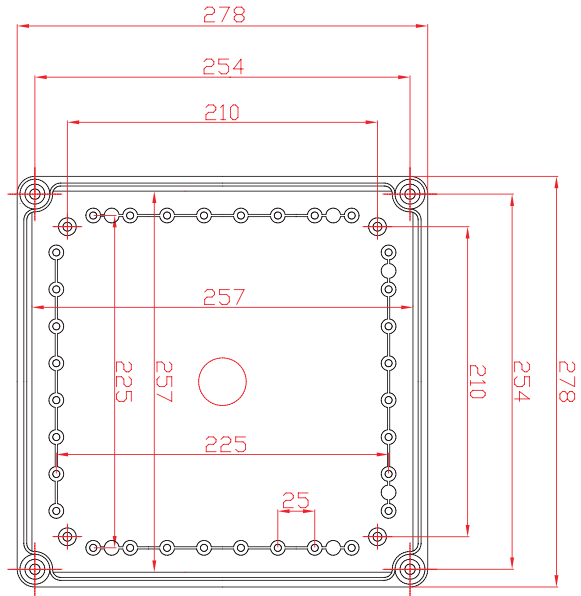


ENCLOSURES



**Size 280 X 280 X 130
(H X W X D mm)**



RoHS **CE**

Type of Enclosure	Cover Colour	Material Type	Article No.
HE-ABS 2828 G	Grey	ABS	01 17 00580
HE-PC 2828 G	Grey	PC	01 17 00596

Height X Width X Depth	mm	280 X 280 X 130	280 X 280 X 130
Material		ABS	Polycarbonate
Base colour		Grey	Grey
Cover colour		Grey	Grey
Cover screws material		Polyamide	Polyamide
Cover screws colour		Grey	Grey
Gasket material		Silicon	Silicon
Technical Information			
Rating			
Ingress Protection		IP 66/67	IP 66/67
Impact Resistance		IK 07	IK 08

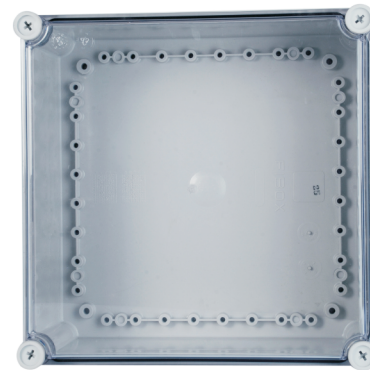
Common applications:

- Push button enclosures
- Electronic and instrumentation enclosures
- Terminal enclosures, Junction boxes
- Power Distribution Enclosures
- Krone Enclosures

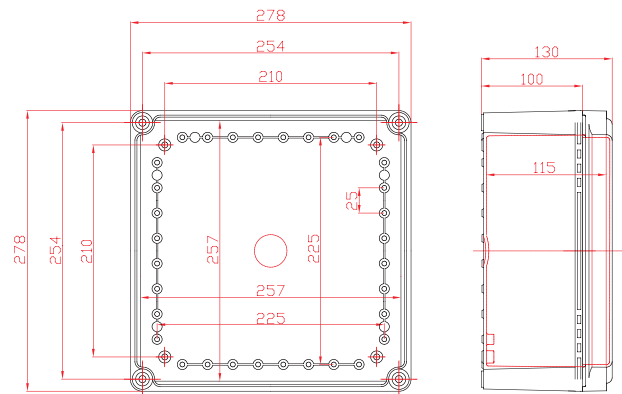
Benefits:

- Easy machining with normal tools
- Easy colouring through pigmentation
- Low weight
- Good resistance to chemical attack
- Excellent insulating properties

ENCLOSURES



Size 280 X 280 X 130 (H X W X D mm)



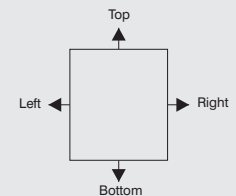
RoHS CE

Type of Enclosure	Cover Colour	Material Type	Article No.
HE-ABS 2828 T	Transparent	ABS	01 17 00588
HE-PC 2828 T	Transparent	PC	01 17 00604

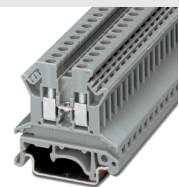
Options for Customised Solutions
Cable Glands (Trinity-Jacob)



Type	Left	Right	Top	Bottom	Total Quantity
PG 7	27	27	27	27	108
PG 9	21	21	21	21	84
PG 11	14	14	14	14	56
PG 13.5	12	12	12	12	48
PG 16	12	12	12	12	48
PG 21	9	9	9	9	36
PG 29	4	4	4	4	16
M12	16	16	16	16	64
M16	14	14	14	14	56
M20	12	12	12	12	48
M25	9	9	9	9	36
M32	4	4	4	4	16
M40	3	3	3	3	12
M50	3	3	3	3	12
M63	2	3	2	2	8



Terminal Block (Phoenix Contact)



Type	Number	Wire Size mm	Amp. Rating
UK 2.5N	40	0.2-2.5	24
UK 5N	33	0.2-4	41
UK 6N	25	0.2-6	57
UK 10N	20	0.5-10	76
UK 16N	18	4-10	101
UIK 16N	18	4-16	101

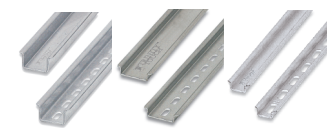
Push Button

Type	Number
22.5 mm	25 Nos
30 mm	25 Nos

MCB

Type	Number
Single Pole	14

DIN Mounting Rail (Trinity Touch)



RoHS

Type	Max. Length for enclosure	Article No.
TDR2-35/7.5 Perforated	110mm	011700271
TDR2-15/5.5 Perforated	110mm	011700254
TDR3-35/7.5 Perforated	110mm	011700283
TDR3-15/5.5 Perforated	110mm	011700279

About Mounting DIN Rails

- Most of the electrical accessories are designed to mount on rails that can be fixed easily on panel boards and equipments.
- Mounting rails made of steel in accordance (DIN 60715) are available in Zinc plated and thick film trivalent chrome passivated. The base metal as steel used for DIN rails as per EN10130. Due to high mechanical strength & durability, high corrosion prohibitive plating and lead free (Confirms to RoHS compliance) provides the best solution for general applications.
- These rails are often used as grounding bars. The current carrying capacity of these rails and the copper wire sizes required to carry that current are given below
- The 35/7.5 high rail is suitable for the majority of application and is the more cost effectiveness.
- When heavy components like large PLC's, Transformers, MPCBS, heavy contactors and relays has to be mount than 35/15 rail is more suitable.
- The 15/5.5 rail is more than half width of 35/7.5 is used for mounting of terminal blocks in confined spaces.

RAIL CURRENT CARRYING CAPACITY

Rail	Material	Current (A)	Wire size AWG	mm2
35/7.5 (Slotted)	Steel	65	8	10
35/7.5 (Un Slotted)	Steel	87	6	16
35/15 (Slotted)	Steel	125	4	25
35/15 (Un Slotted)	Steel	125	4	25
15/5.5 (Slotted)	Steel	35	12	4
15/5.5 (Un Slotted)	Steel	47	10	6

Difference between TDR2 and TDR3 series DIN Rails				
S.No.	Properties	Unit	TDR2	TDR3
1	Tensile Strength	N/mm2	270	320 -410
2	Elongation	N/mm2	28%	30 -36%
3	Hardness	HRB	50	
4	Elastic Limit	N/mm2	-----	230 -280
5	SST stability Red Rust (Minimum)	Hours	240	350

ENCLOSURES

Socket / Plug

Type	Number
16A - 5 PIN	4
16A - 3 PIN	4
32A - 5 PIN	4
32A - 3 PIN	4
63A - 5 PIN	2
125A - 5 PIN	2

Size 280 X 280 X 130 (H X W X D mm)

ACCESSORIES

Ordering Data For Accessories

Mounting Plate	Type	Article No.
Mounting Plate CRCA Sheet Thickness 1.5mm Zinc Plated	Heavy MP 2828	01 17 00618
Mounting Clamp Mounting Clamp CRCA Sheet Thickness 3 mm Zinc Plated	Heavy MC 280	01 17 00619
Hinge Hinge Material Hinge Colour	Plastic Grey	Article No. 01 17 00625
Cover Screw Polyamide Grey Colour		Article No. 01 17 006912
Window Window Material Window Colour	Plastic Transparent	Article No. 01 17 00909

Existing Customised Solutions

Existing Customised Solutions of Terminal Block Enclosure					
Description	Article No.	DIN Mounting Rail		Terminal Block	
		Type	Qty.	Type	Qty.
CS-ABS 2828 SU (6181120)	01 17 00069	TDR2-35/7.5	250 mm	UK 2.5B	42
				UK 5N	10

Existing Customised Solutions of Surge Arrester Enclosure					
Description	Article No.	DIN Mounting Rail		Surge Arrester	
		Type	Qty.	Type	Qty.
CS-ABS 2828 SAB	01 17 00031	TDR2-35/7.5	250 mm	FLT Plus CTRL 0.9	3
				VAL-MS 320 ST	3
				FLT 100 N/PE CTRL 1.5	1

Above mentioned article numbers are our existing solutions in TRIBOX™ Basic 2828 enclosures. For application details refer:

Customised Applications	Page Nos.
Customised solutions of terminal block enclosures	140
Customised solutions of terminal block surge arrester enclosure	140